

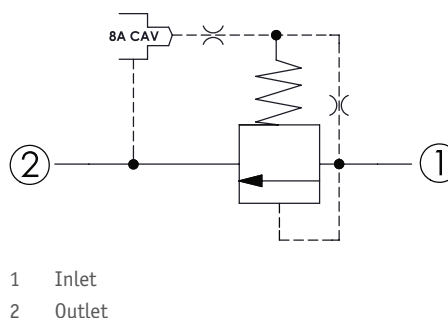
CRP-18A - Relief valve

Pilot operated, balanced piston relief main stage with integral 8A control cavity

1 Available versions

Ordering example:

CRP-18A	-20	-D	-8
Type	Operation	Spring	Cavity



Operation

Coding	Description
20	Port 1 to 2 (P to T)

Spring

Coding	Minimum control pressure	
	(bar)	(psi)
D	1.7	25
W	7	100

i INFORMATION

W spring is suit for higher pressure drop application. Please consult HAWE.

Cavity

Coding	Cavity
8	T-8A
8W	08W-2

2 Technical data

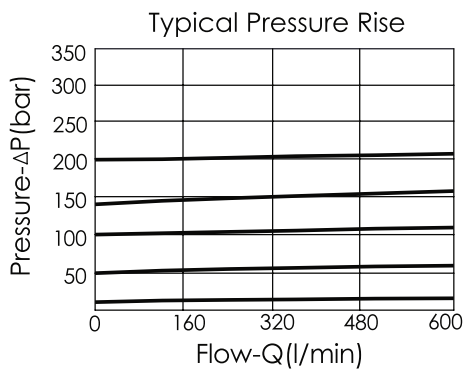
Operating pressure p_{max}	350 bar
Flow rate Q_{max}	760 l/min

Installation torque	465 - 500 Nm
Cavity	T-18A (18AB-2)
Weight	0.94 kg

i INFORMATION

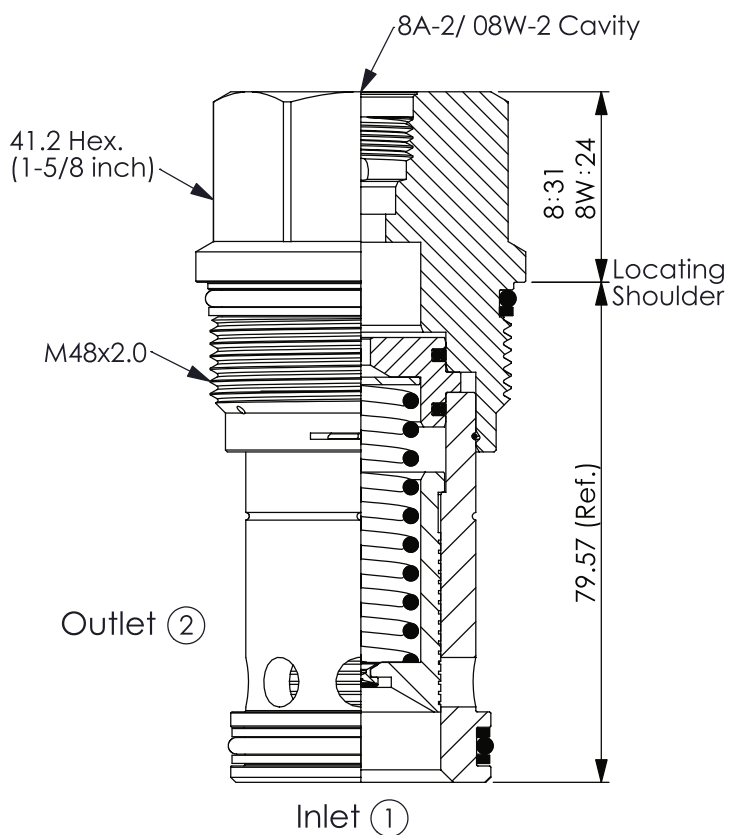
- Response time-typical (10 ms)
- Maximum leakage approximately (82 cm³/min/70 bar)
- Will accept maximum pressure at port **2**; suitable for use in cross port relief circuits. If used in cross port relief circuits, consider spool leakage.

Characteristic lines



3 Dimensions

All dimensions in mm, subject to change.



4 Other information

see [Technical information HAWE cartridge valves: D 8219](#)

see [Recommendation for hydraulic fluid: D 5488/1](#)

